



TT Series Thermostatic Steam Traps

All Stainless Steel

For Pressures to 300 psig (20 bar)...Capacities to 3,450 lb/hr (1,568 kg/hr)

Steam Trapping and Steam Tracing Equipment



Description

The balanced pressure bellows thermostatic steam trap has a sealed, stainless-steel body that is lightweight, compact and highly resistant to corrosion. The cage, bellows, valve and seat are all assembled into a precisely calibrated operating unit that ensures positive opening and closing action at slightly below steam temperature. The unique, stainless-steel construction is smaller and much lighter than comparable cast iron, brass or steel traps. TTF-1 is available with straight-thru or right angle connections. TT-2000 with the 360° universal stainless steel connector comes with either a standard connector or the IS-2 connector with integral strainer.

NOTE: Also can be used as a thermostatic air vent (Reference TTF Series Thermostatic Air Vents page 454).

Specification

Thermostatic steam trap, type ... in stainless steel.

How to Order

Specify:

- Model number
- Size and type of pipe connection
- Connector type (TT-2000)

Connections

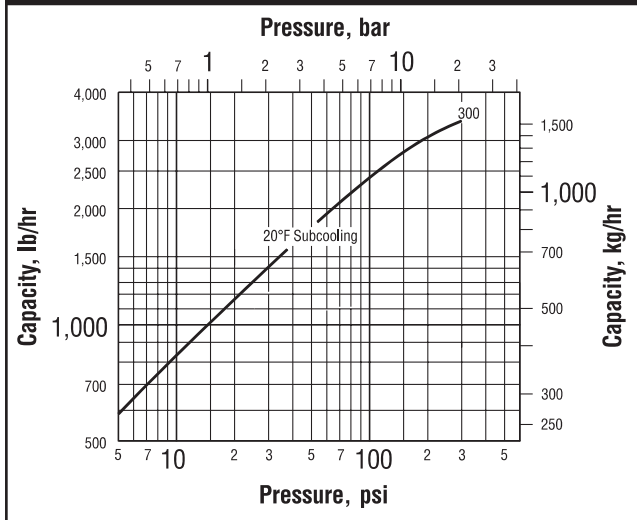
1/2", 3/4" (15 mm, 20 mm)
1" (25 mm) IS-2 connector only
Socketweld

Materials

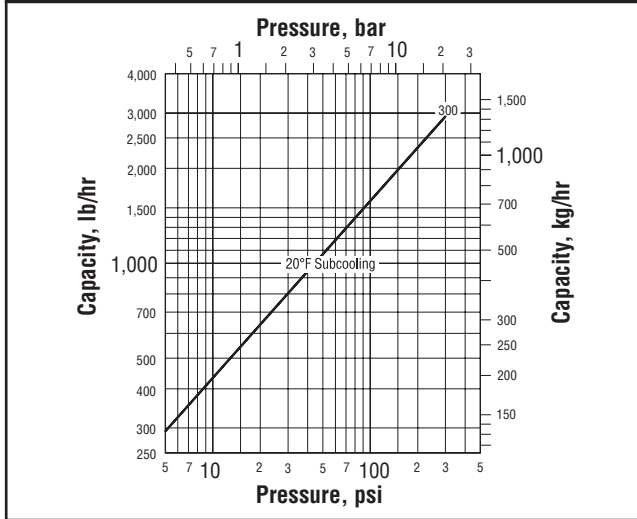
Body: 304L stainless steel
Connector: 304 stainless steel (TT-2000)
Bellows: Stainless steel and bronze with phosphor-bronze bellows, caged in stainless steel

For a fully detailed certified drawing, refer to:
Standard Connector CD #1018 IS-2 Connector CD #1117

TTF Series Capacity



Model TT-2000 Capacity



Model	TTF-1	TTF-1R	TT-2000
Design	Welded		
Connections	Screwed (NPT and BSPT)		Screwed (NPT and BSPT), Socketweld and Flanged
Material			
Body	ASTM A240 - 304L		
Valve	Bronze		
Seat	Stainless steel		
Thermostatic air vent	Standard stainless steel & bronze w/phosphor bronze bellows caged in stainless steel		
Optional: All stainless steel thermostatic air vent			
Connector			
Standard	—	—	Stainless steel - 304
IS-2 w/integral strainer	—	—	Stainless steel - 304 w/20x20 mesh 304 SS screen
TVS 4000	ASTM A351 Gr. CF8M with screen, test valve, and blowdown valve—stainless steel		
Maximum Operating Conditions			
Maximum allowable pressure (vessel design)	300 psig @ 450°F (20 bar @ 232°C)		
Maximum operating pressure	300 psig (20 bar)		
Maximum operating temperature bellows	422°F (217°C)		

Designs, materials, weights and performance ratings are approximate and subject to change without notice. Visit www.armstronginternational.com for up-to-date information.

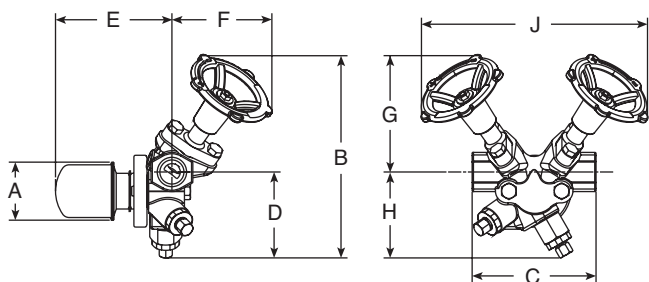
TT Series Thermostatic Steam Traps

All Stainless Steel

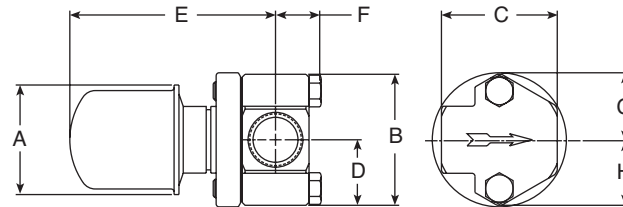
For Pressures to 300 psig (20 bar)...Capacities to 3,450 lb/hr (1,568 kg/hr)



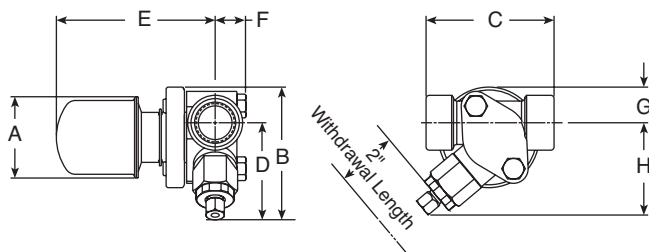
Steam Trapping and
Steam Tracing Equipment



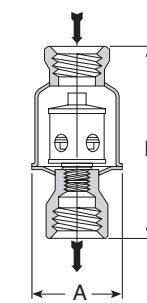
Series TT-2000 With TVS 4000 Trap Valve Station



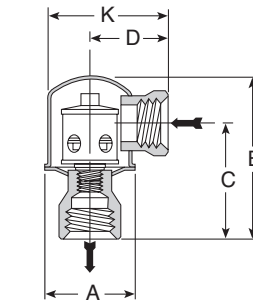
Series TT-2000 With Standard Connector



Series TT-2000 With Integral Strainer and Blowdown Valve



Series TTF-1 Trap



Series TTF-1R Trap

TT-2000 Series Steam Trap								
Model No.	TT-2000							
	Standard Connector		IS-2 Connector With Integral Strainer				TVS 4000 Connector	
	in	mm	in	mm	in	mm	in	mm
Pipe Connections	1/2, 3/4	15, 20	1/2, 3/4	15, 20	1	25	1/2, 3/4	15, 20
"A" Trap Diameter	2-1/4	57	2-1/4	57	2-1/4	57	2-1/4	57
"B" Total Height	2-11/16	68	3-5/8	92	3-5/8	92	7-13/16	198
"C" Face-to-Face	2-3/8	60	3-1/2	89	4	101	4-3/4	120
"D" Connection \varnothing to Bottom	1-3/8	46	2-5/8	67	2-5/8	67	3-1/4	83
"E" Connection \varnothing to Outside of Trap	4-1/4	107	4-3/4	120	4-15/16	125	4-1/2	115
"F" Connection \varnothing to Front of Connector	13/16	20	7/8	22	7/8	22	3-7/8	98
"G" Connection \varnothing to Top	1-3/8	46	1	25	1	25	4-1/2	114
"H" Connection \varnothing to Bottom of Connector	1-3/8	46	2-1/2	64	2-1/2	64	3-1/4	83
"J" Width Across Handwheels (valve open)	—	—	—	—	—	—	8-11/16	221
Test Port Connection	—	—	—	—	—	—	1/4 NPT	6
Trap Only Weight, lb (kg)	1-1/2 (0.70)							
Trap and Connector Weight, lb (kg)	3.2 (7)		3.4 (7.5)				8 (3.6)	

TTF-1 Series Steam Trap								
Model No.	TTF-1 Straight-Thru Connection				TTF-1R Right-Angle Connection			
	in	mm	in	mm	in	mm	in	mm
Pipe Connections	1/2	15	3/4	20	1/2	15	3/4	20
"A" Trap Diameter	2-1/4	57	2-1/4	57	2-1/4	57	2-1/4	57
"B" Total Height	4-1/2	114	4-11/16	119	3-3/4	97	3-15/16	100
"C" Face-to-Face	—	—	—	—	2-5/8	67	2-13/16	71
"D" Connection \varnothing to Bottom	—	—	—	—	1-15/16	49	1-7/8	48
"K" Inlet to Outside of Trap	—	—	—	—	3-1/16	78	3	76
Trap Only Weight, lb (kg)	3/4 (0.4)		1 (0.5)		3/4 (0.4)		1 (0.5)	

Designs, materials, weights and performance ratings are approximate and subject to change without notice. Visit www.armstronginternational.com for up-to-date information.