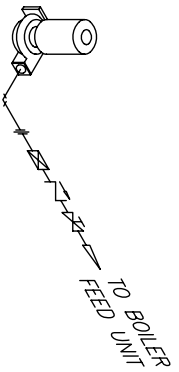


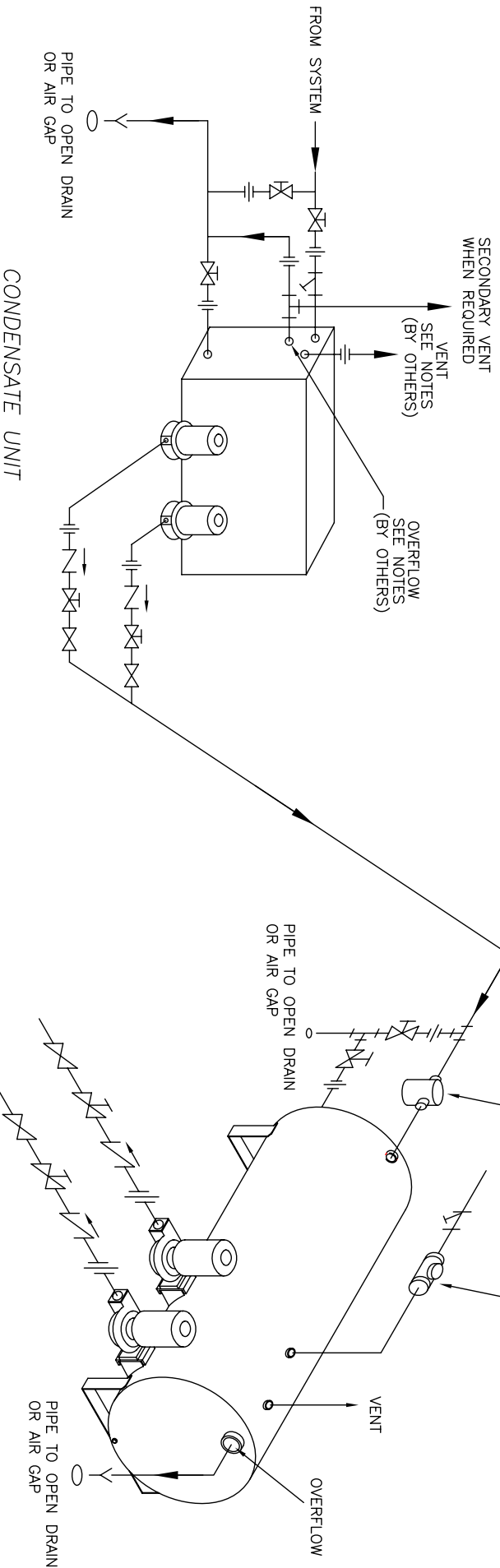
LEGEND

- ☒ AUTOMATIC FLOW CONTROL VALVE
- ☒ BALANCING VALVE
- ☒ GATE VALVE
- ☒ CHECK VALVE
- ☒ INLET STRAINER
- ☒ UNION
- ☒ AIR GAP

DISCHARGE PIPING W/ AUTOMATIC FLOW VALVE



If centrifugal feed pump is operating at 75 PSIG or greater a Automatic Flow Valve typically is utilized.



NOTES:

- INSTALL FULL SIZE (MINIMUM SIZE) VENT TO ATMOSPHERE.
- INSTALL FULL SIZE (MINIMUM SIZE) OVERFLOW TO AIR-GAP OR OPEN DRAIN.
- VENT PIPING DETAIL MUST BE DESIGNED AND INSTALLED BY A PROFESSIONAL LICENSED & REGISTERED AS REQUIRED FAMILIAR WITH EQUIPMENT AND ITS INTENDED USE TO MEET ALL LOCAL, STATE AND FEDERAL CODES RULES AND REGULATIONS.



MANUFACTURED BY

SHIPPENSBURG PUMP COMPANY INC.
P.O. Box 279 Shippensburg, Pa. 17257
PHONE 717 532-7321 / FAX 717 532-7704
WWW.SHIPCOPIUMPS.COM

SHIPCO® IS A REGISTERED TRADEMARK OF SHIPPENSBURG PUMP CO., INC.

Typical Piping Diagram
Condensate Unit
Centrifugal Pumps

| | | |
|-----------------|------|----------|
| DRAWN BY | DATE | REVISION |
| S.A.D. | 6/04 | .5 |
| DIMENSION FRONT | | |

30012