

DIMENSIONS & DATA CERTIFIED FOR:

Representative:

Order:

Customer:

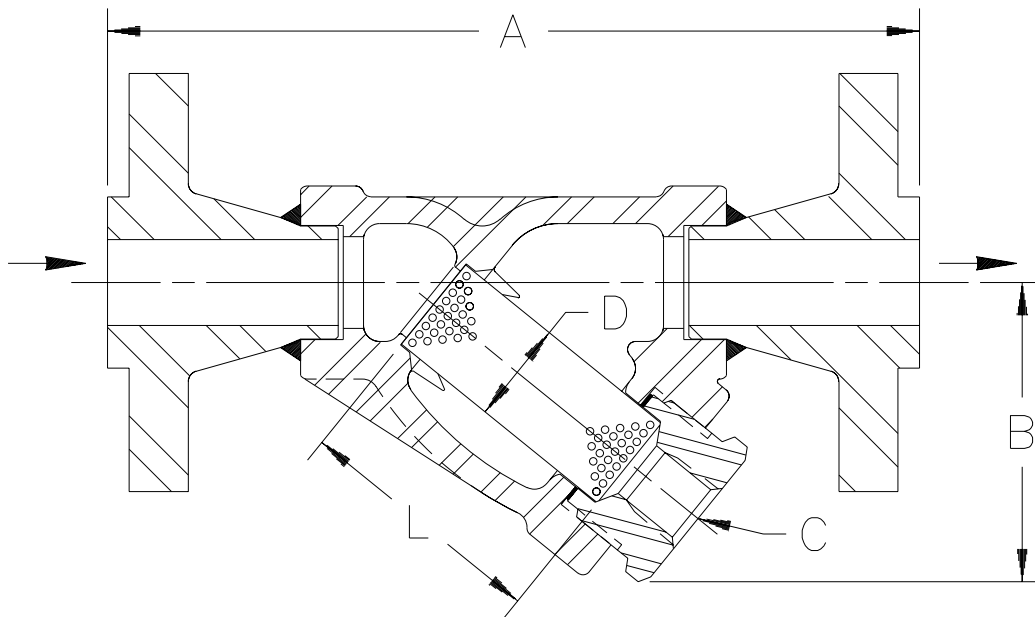
Order:

Project:

Requirements:

By:

Date:



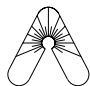
B1FL

1" Strainer Class 600 shown above

Flange Conn. ANSI B16.5
Dimensions A & B $\pm 3/16"$ [5mm]

| DESCRIPTION | D I M E N S I O N S | | | | | | | | |
|--|---|-----------------|-----------------|---|-----------------|-----------------|--|-----------------|-----------------|
| | CLASS 150 <input type="checkbox"/> | | | CLASS 300 <input type="checkbox"/> | | | CLASS 600 <input type="checkbox"/> | | |
| CONNECTION (FLG.) | 1/2" [DN15] | 3/4" [DN20] | 1" [DN25] | 1/2" [DN15] | 3/4" [DN20] | 1" [DN25] | 1/2" [DN15] | 3/4" [DN20] | 1" [DN25] |
| *A* (FACE TO FACE) [mm] | 6-27/32" [174] | 7-7/16" [189] | 8-15/32" [215] | 7-7/32" [183] | 7-13/16" [198] | 8-31/32" [228] | 7-23/32" [196] | 8-5/16" [211] | 9-15/32" [241] |
| *B* (BOTTOM TO ϕ INLET) [mm] | 2-3/4" [70] | 3-1/16" [78] | 3-9/16" [90] | 2-3/4" [70] | 3-1/16" [78] | 3-9/16" [90] | 2-3/4" [70] | 3-1/16" [78] | 3-9/16" [90] |
| *C* (BLOW DOWN THREAD) | 3/8" NPT [DN10] | 1/2" NPT [DN15] | 3/8" NPT [DN10] | 1/2" NPT [DN15] | 3/8" NPT [DN10] | 1/2" NPT [DN15] | 3/8" NPT [DN10] | 1/2" NPT [DN15] | 3/8" NPT [DN10] |
| *D* (DIA. OF SCREEN) [mm] | 13/16" [21] | 31/32" [25] | 1-3/16" [30] | 13/16" [21] | 31/32" [25] | 1-3/16" [30] | 13/16" [21] | 31/32" [25] | 1-3/16" [30] |
| *L* (LENGTH OF SCREEN) [mm] | 2-1/16" [52] | 2-3/8" [60] | 2-15/16" [75] | 2-1/16" [52] | 2-3/8" [60] | 2-15/16" [75] | 2-1/16" [52] | 2-3/8" [60] | 2-15/16" [75] |
| WEIGHT [kgs] | 6-1/2 lb [2.9] | 7-1/2 lb [3.4] | 10-1/2 lb [4.8] | 6-1/2 lb [2.9] | 9-1/2 lb [4.3] | 13-1/2 lb [6.1] | 8-1/2 lb [3.9] | 9-1/2 lb [4.3] | 13-1/2 lb [6.1] |
| MAXIMUM ALLOWABLE PRESSURE (VESSEL DESIGN) | 205 psig at 390°F [14.1 bar at 198.8°C] 285 psig at 100°F [19.6 bar at 37.8°C] | | | 605 psig at 490°F [41.7 bar at 254.4°C] 740 psig at 100°F [51 bar at 37.8°C] | | | 1135 psig at 562°F [78 bar at 294°C] 1480 psig at 100°F [102 bar at 37.8°C] | | |

| LIST OF MATERIALS | |
|-------------------|----------------------------|
| NAME OF PART | MATERIAL |
| BODY | ASTM A216 GR. WCB |
| SCREEN | T304 SS .045" PERF. |
| GASKET | SOFT STEEL |
| RETAINER | ASTM A108 GR. 1040 or 1045 |



Armstrong International, Inc.
Three Rivers Division
Three Rivers, MI 49093
(616) 273-1415 Fax (616) 278-6555

| | | |
|--|--------|----------|
| Product | CD No. | Date |
| STRAINER B1FL W/ CL. 150, 300 & 600 FLGS. 1/2" - 1" WCB | 1050 | 10/28/96 |
| | | Rev. A |