

DIMENSIONS & DATA CERTIFIED FOR:

Representative:

Order:

Customer:

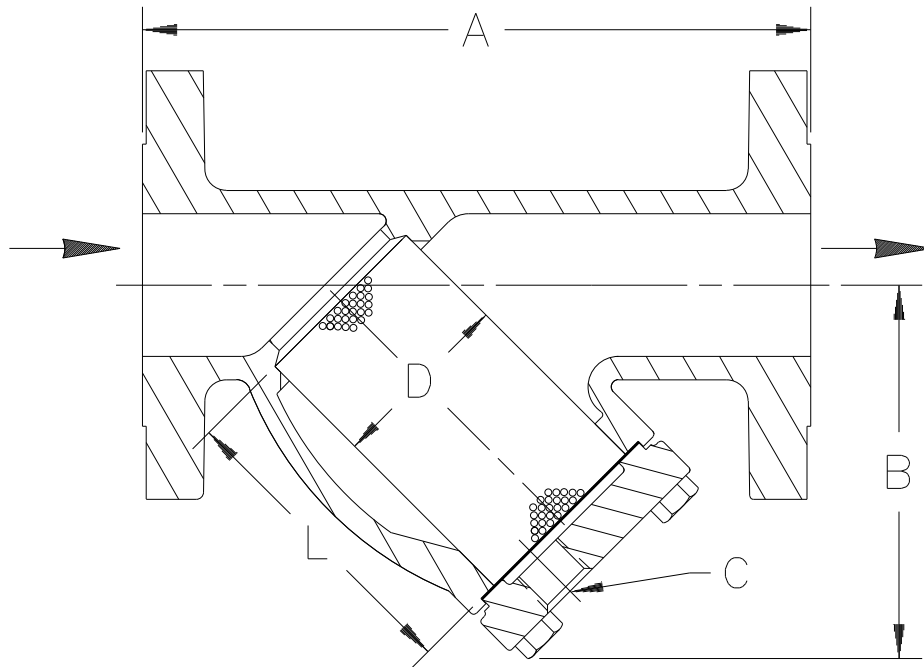
Order:

Project:

Requirements:

By:

Date:



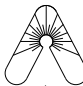
2-1/2" CL. 250 Strainer shown above

Dimensions A & B ±1/8" [3mm]

DESCRIPTION	DIMENSIONS					
CONNECTION (NPT)	2-1/2" [DN65]	3" [DN80]	4" [DN110]	5" [DN140]	6" [DN170]	8" [DN200]
"A" (FACE TO FACE) [mm]	11-1/16" [281]	14-1/8" [359]	17-1/8" [435]	21-3/4" [552]	23-1/2" [597]	27-1/2" [698]
"B" (BOTTOM TO ϕ INLET) [mm]	6-9/16" [166]	8-1/2" [216]	10-3/4" [273]	14" [356]	15-3/4" [400]	20-1/4" [514]
"C" (BLOW DOWN THREAD)	3/4" NPT [DN20]	1-1/4" NPT [DN32]			1-1/2" NPT [DN40]	2" NPT [DN50]
"D" (DIA. OF SCREEN) [mm]	3-3/16" [81]	4-3/16" [106]	4-15/16" [125]	6-11/16" [170]	7-11/16" [195]	9-15/16" [252]
"L" (LENGTH OF SCREEN) [mm]	5-7/16" [138]	6-5/8" [168]	9-5/16" [125]	11-11/16" [297]	13-1/8" [333]	17-11/16" [449]
WEIGHT [kgs]	45 lb [20.5]	67 lb [30.5]	124 lb [56.4]	206 lb [93.6]	295 lb [134]	508 lb [231]
MAXIMUM ALLOWABLE PRESSURE (VESSEL DESIGN)	250 psig at 406°F [17.2 bar at 208°C] 400 psig at 150°F [27.6 bar at 65°C]					

LIST OF MATERIALS	
NAME OF PART	MATERIAL
BODY	ASTM A48 CL. 30
SCREEN	T304 SS .045" PERF.
GASKET, RETAINER	NON-ASBESTOS
RETAINER, BOLTED	ASTM A48 CL. 30
SCREW, CAP	ASTM A193 GR. B7

FLANGES COMPLY W/ANSI B16.1



Armstrong International, Inc.
Three Rivers Division
Three Rivers, MI 49093
Armstrong (269) 273-1415 Fax(269) 278-6555
Posted on Armstrong's homepage www.armstrong-intl.com

Product	CD No.	Date
STRAINER		9/12/96
A1FL 2-1/2" - 8" CL. 250 CAST IRON	1046	Rev. A