

DIMENSIONS & DATA CERTIFIED FOR:

Representative:

Order:

Customer:

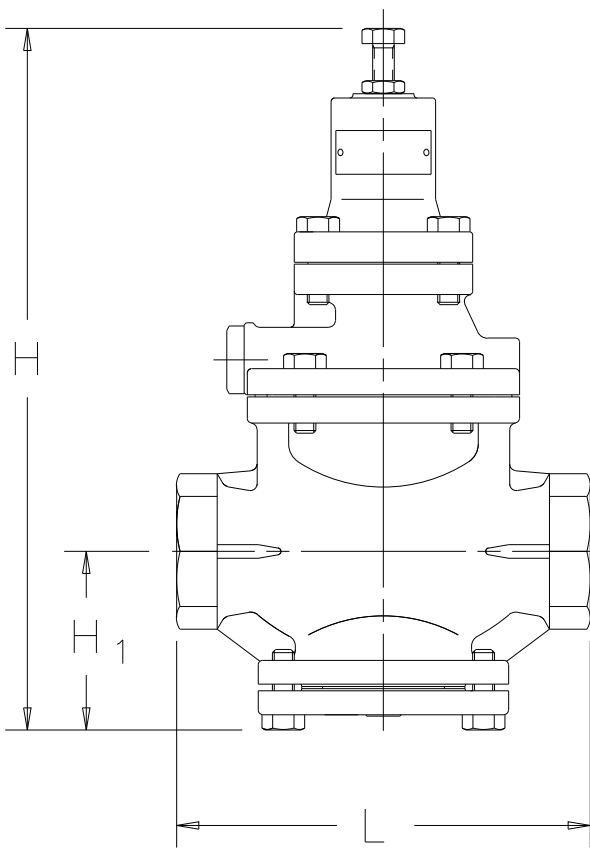
Order:

Project:

Requirements:

By:

Date:



LIST OF MATERIALS:

BODY	ASTM A536 DUCTILE IRON
MAIN VALVE	AISI 420 SS
MAIN VALVE SEAT	
PILOT VALVE	AISI 316 SS
PILOT VALVE SEAT	AISI 304 SS
DIAPHRAGM	AISI 301 SS
PISTON	AISI 304 OR AISI 351 SS
CYLINDER	AISI 403 OR ASTM A743 SS
BOLTING	SAE 4137 ALLOY STEEL

TECHNICAL INFORMATION:

APPLICATION	STEAM
INLET PRESSURE	15 - 250 psig [1.0 - 17.2 bar]
REDUCED PRESSURE	5 - 125 psig [0.3 - 8.6 bar]
	125 - 200 psig [8.6 - 13.8 bar]
MAX. TEMPERATURE	450°F [232°C]
MIN. DIFFERENTIAL	7 psig [0.5 bar]

DESIGN INFORMATION:

CONN. SIZE	L	H	H ₁	WEIGHT	C _v [K _v]
1/2 [15]	5.9 [150]	11.2 [285]	2.5 [64]	15.5 lbs [7.0 kg]	1.0 [0.9]
3/4 [20]	6.1 [155]				2.3 [2.0]
1" [25]	6.3 [160]	11.8 [300]	2.6 [67]	19 lbs [8.5 kg]	4.0 [3.5]
1-1/4 [32]	7.5 [190]	12.7 [323]	3.2 [82]	26 lbs [12.0 kg]	6.5 [5.6]
1-1/2 [40]				28 lbs [12.5 kg]	9.0 [7.8]
2 [50]	8.7 [220]	13.7 [347]	3.7 [93]	40 lbs [18.0 kg]	16.0 [13.9]

- NOTES:
 1. MAX. REDUCTION RATIO 20-1
 2. ANSI CL. IV SHUTOFF.

DIMENSIONS IN [] ARE METRIC.



Product	ENGLISH	CD No.	Date
GP-1000 NPT PRV	WEB Y N <input checked="" type="checkbox"/>	CD2104	12/09/2011
		Rev; C	By; Hooley