

DIMENSIONS & DATA CERTIFIED FOR:

Representative:

Order:

Customer:

Order:

Project:

Requirements:

By:

Date:

LIST OF MATERIALS:

NAME OF PART

Body	AISI T316 SS
Valve	AISI 440 SS HARDENED
Seat	AISI T304 SS
Bellows	AISI T316L SS

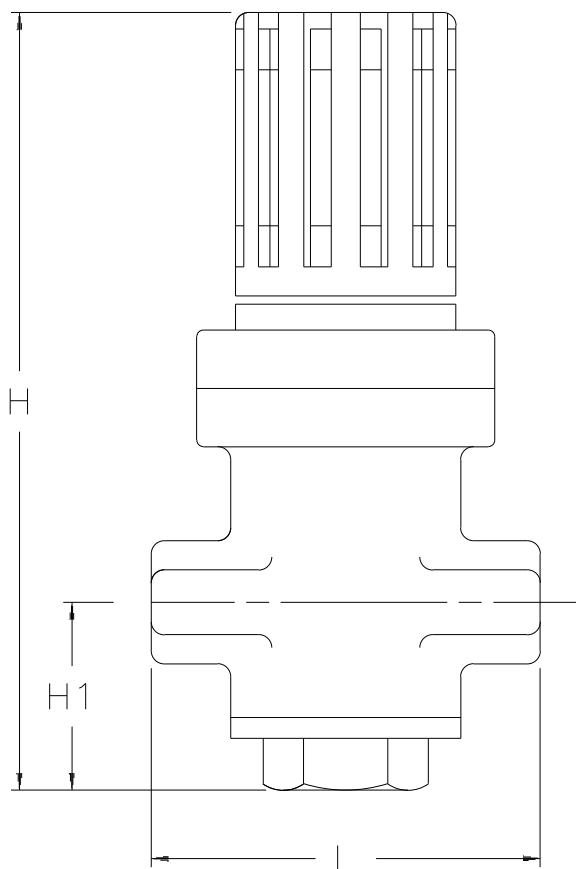
TECHNICAL INFORMATION:

MODEL NO.	INLET psig[bar]	REDUCED psig[bar]	DIFF. MIN.	TEMP. MAX.
GD-30S	15-300 [1-20]	3-15 [0.21-1.0]	7 psig [0.5 bar]	430°F [220°C]
		7-60 [0.48-4.0]		
		50-140 [3.4-9.6]		

GD-30S IS FOR STEAM, AIR & NON CORROSIVE GAS APPLICATIONS.

DESIGN INFORMATION:

SIZE NPT[DN]	L	H	H1	Cv [Kv]	WEIGHT
1/2 [15]	3-1/8 [80]	7-11/16 [196]	2 [51]	1.3 [1.1]	4-1/4 lbs [1.9 kgs]
3/4 [20]	3-3/8 [85]			1.5 [1.3]	
1" [25]	3-3/4 [95]			2.5 [2.2]	



Dimensions Are In Inches [mm]



Product

ENGLISH

CDY No.

Date

GD-30S

WEB
Y/N
✓

1089

11/29/2011

Rev; E

By; paulg